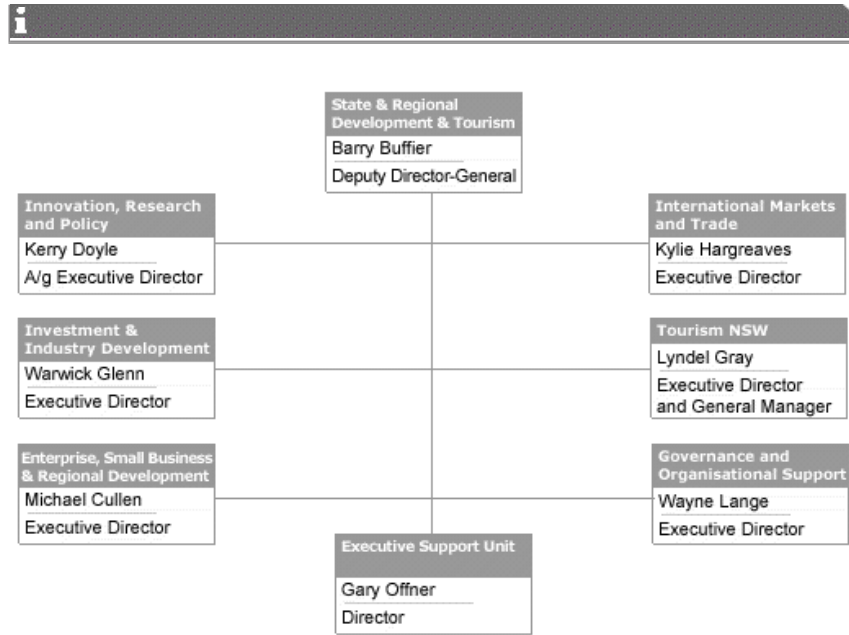


Organisational Structure



The State & Regional Development and Tourism Division of Industry & Investment NSW comprises the following divisions and units:

Innovation, Research and Policy Division

The Innovation, Research and Policy division drives, with other agencies, the NSW economic development strategy at a whole of economy level based on research, market intelligence, a greater understanding of our comparative advantage and opportunities for innovation and capacity building.

Kerry Doyle
A/g Executive Director

This division contains the following:

- Strategy, Policy and Stakeholders Engagment
- Office for Science and Medical Research
- Research and Economic Analysis
 - Innovation Unit
- Corporate Communications
 - Brand Sydney

Investment and Industry Development Division

Industry Development and Investment Division undertakes industry specific analysis for the identified industry priority areas based on market intelligence and stakeholder consultation and attracts new investment projects to NSW.

Warwick Glenn
Executive Director

This division contains the following:

- Industry Cluster 1:
 - Manufacturing
 - Defence
 - Airlines/marine
 - Construction
 - Pharmaceuticals/Biotechnology
 - Agriculture, food, wine
 - Minerals
- Industry Cluster 2
 - Resources, energy
 - Tourism
 - Retail
 - Transport and logistics
 - Storage
- Industry Cluster 3

- Financial services
- Business services (including education)
- ICT
- Entertainment, design and media
- Health and community (including aged care)
- Homebush Motor Racing Authority

.Enterprise Small Business and Regional Development Division

Enterprise and Regional Development Division delivers programs and services to DSRD clients throughout NSW with a focus on SMEs.

Michael Cullen
Executive Director

This division includes:

- Service delivery coordination
- Regional manager (Hunter and Central Coast)
- Regional manager (Illawarra)
- Regional manager (West)
- Regional manager (South)
- Regional manager (North)
- Regional director (Sydney)
- Retail Tenancy Unit

.International Markets and Trade Division

International Markets and Trade Division identifies and develops priority markets for export opportunities and potential inbound investment attraction from key international markets. This includes managing the State's international presence.

Kylie Hargreaves
Executive Director

This division includes:

- International office management
- Skilled and business migration
- International business services
- International markets
 - China and Asia
 - UK/Europe expired
 - Middle East and India
 - Americas
- Export advisors

.Tourism Division (Tourism NSW)

Tourism Division works to increase the State's domestic and international visitation through a collaborative approach between industry and Government including delivery of the Tourism Industry Plan.

Lyndel Gray
Executive Director and General Manager

- Strategy and alliances (incl. Tourism Board)
- Marketing and communications
- Visit Sydney
- Regional Tourism

.Governance and Organisational Support Division

Governance and Organisational Support Division will provide governance and corporate services support to operational areas.

Wayne Lange
Executive Director

- Corporate governance, audit, risk management, program evaluation and review
- Human resources
- Information and communications technologies (ICT)
- Legal
- Finance, grants and funding, administration, procurement
- Trade and investment centre

.Executive Support Unit

Executive Support Unit provides executive support to the Director General and Ministerial Offices.

Gary Offner
Director, Corporate Operations